



Introduction to eXceed 6

An X Windows Server for PCs

PURPOSE OF THIS DOCUMENT 1

HARDWARE, SOFTWARE AND ACCOUNT REQUIREMENTS 1

WHERE TO GET EXCEED..... 2

INSTALLING EXCEED 6 2

 SETUP WINDOW..... 2

 DIRECTORY WINDOWS..... 3

 START INSTALL WINDOW 3

CONFIGURING EXCEED'S XSERVER..... 5

 COMMUNICATIONS SETTINGS..... 5

 WINDOW MODES 5

 PERFORMANCE TUNING..... 6

 X SELECTION 6

STARTING AN X WINDOWS SESSION 7

QUITTING EXCEED..... 7

TROUBLESHOOTING 8

 X WINDOWS STARTS AND THEN DIES..... 8

 LOGIN WINDOW APPEARS AND THEN NOTHING HAPPENS 8

 LOGIN WINDOW DOES NOT APPEAR..... 8

 XDMCP FAILED ERROR WHILE CONNECTING TO AN ALPHA MACHINE**ERROR! BOOKMARK NOT DEFINED.**

 FONT ERRORS..... 8

GLOSSARY 9

 X WINDOWS..... 9

 EXCEED..... 9

 HOST 9

 CLIENT 9

 SERVER..... 9

Purpose of This Document

This document describes the function and features of the eXceed application. EXceed is used to connect your PC to a UNIX machine (e.g. crick) to run graphical window applications on the UNIX machine but display them on your PC (see fig. 1). It is not intended to be a document about the X Window System or UNIX. Please see the *Glossary* for definitions.

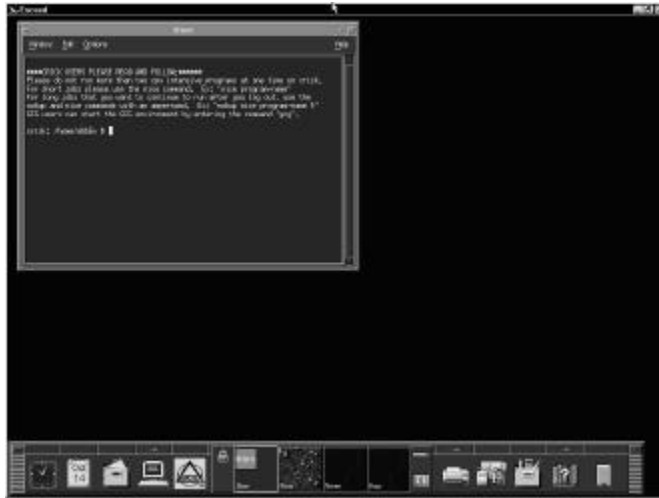


Figure 1 Typical X Windows Display

Hardware, Software and Account Requirements

In order to run eXceed, your system must meet these requirements:

Minimum hardware requirements

- 386, 486, or Pentium Processor
- Minimum 12 megabytes of RAM for Windows 95 or 98
- Minimum 24 megabytes of RAM for Windows NT
- A hard disk drive with at least 40MB - 50MB of free space

Minimum software requirements

- Windows 95, 98, or Windows NT
- PC connected to the UVa network.

Account requirements

- You must have an account on one of ITC's RS/6000 machines (such as avery, crick, or blue). To obtain an account go to the URL <http://www.itc.virginia.edu/accounts/home.html>. If you have any problems call the ITC Help Desk at 924-3731.

Where to get eXceed

UVa has a site license for eXceed and it can be purchased through Cavalier Computers. In the current version of eXceed (version 6) there are different installation kits for Window 95/98, and Windows NT.

Installing eXceed 6

Insert the CD into your CD-ROM drive. Run the command D:setup.exe, where D is the letter of your CD-ROM drive. If you have a different letter assigned to your CD-ROM drive, substitute it for D. You will be prompted for several installation options and the defaults tend to work for most users.

Setup Window

The Setup window will appear for configuring what type of installation to perform (see fig. 2). Select Typical.

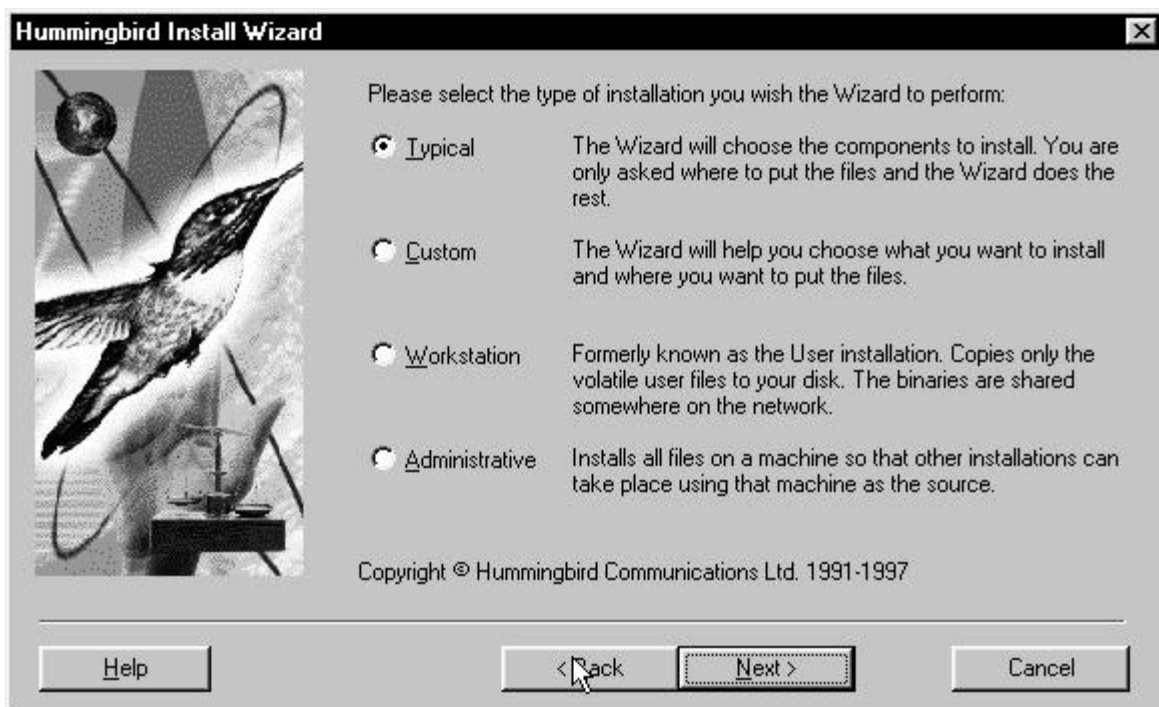


Figure 2 Setup Type

The Workstation and Administrative Setup Types are options for network server installs. The Custom Method of installation would be used for installing additional fonts and for selecting which components to install.

Directory Windows

The following windows will appear for configuring where eXceed should be installed on your machine (fig. 3 and 4). The sample windows are an example and the path will differ depending on the platform you're using:



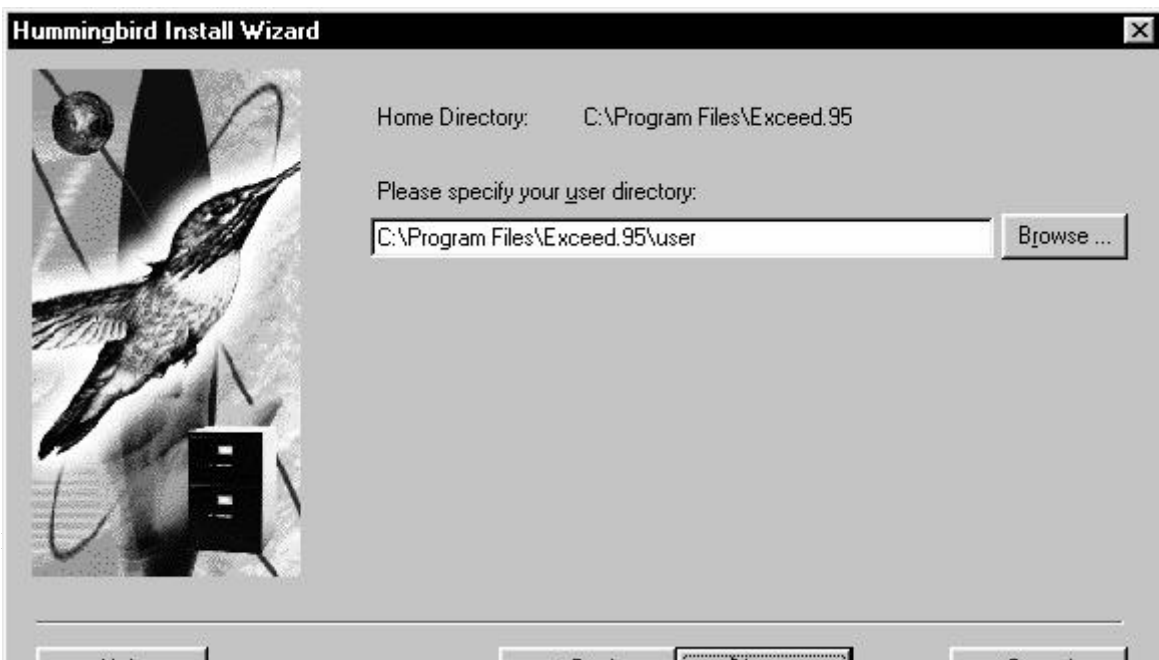
Windows 95, Windows 98 or Windows NT.

Figure 3 Directory

Figure 4 User Directory

Start Install Window

This is used to verify your installation options before proceeding. Click on Finish to begin installation.



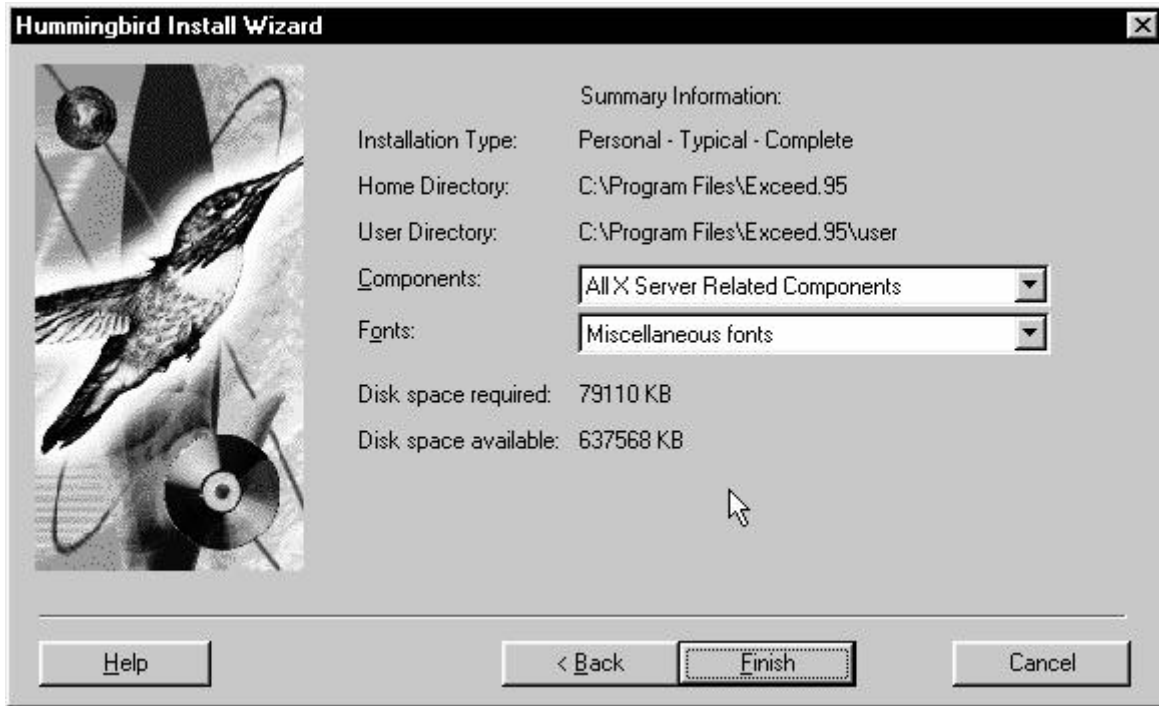


Figure 5 Install Window

All platform installations will display a window asking the user to register. Click Register Now to register eXceed right away. Click Register Later to skip registration for now.

All platform installations will display a window asking the user to verify what Keyboard File to use. Use the default that is selected. Click OK.

You will be given the option of providing an Xconfig password. This may be useful for preventing users from changing the configuration of eXceed on your machine. Click OK. If you do not want to set up a password, click Skip.

The install program will ask to create a shortcut on the desktop. Choose Yes and Next to create the shortcut. If you do not want to create a shortcut, click Skip.

The last step in the installation is to tune the Xserver for optimal graphics performance. This will take several minutes. You may click on Yes to do it now or you can do it at a later time. If you would prefer to do it another time please refer to the section *Performance Tuning*.

When eXceed is finished installing, it will want to reboot your computer. This is a necessary step before you can begin using eXceed. Click Yes when prompted.

Configuring eXceed's Xserver

The main purpose for installing eXceed is for the X server. EXceed must be configured properly before trying to launch an X Windows session. To configure the Xserver run the Xconfig utility. Under Windows 95/98 and Windows NT go to Start/Programs/eXceed/Xconfig.

Communications Settings

Double click on the Communication icon. In the Mode selection box click on the down arrow and select XDMCP-query. Click on Configure button (see fig.6).

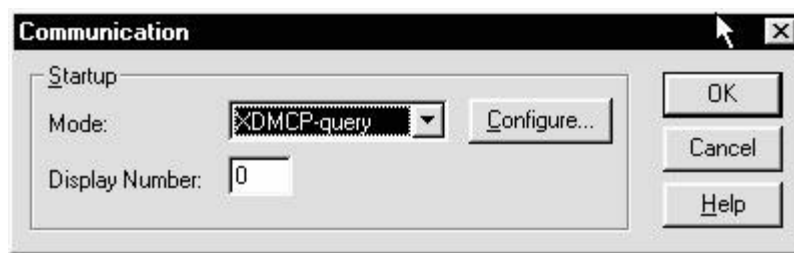


Figure 6 Communication Window

Under Connect Host (see fig. 7), type in the name of the machine you want to connect to. For example type in crick.med.virginia.edu. If you are connecting to alpha10.bioch or alpha0.bioch then you will need to delete xdmkey in the Key field. It should be left blank. The remainder of the settings generally do not need to be changed. At this point click on OK to save the configuration. You will be brought back into to the Communication Window (fig. 6) and need to click OK again to exit the Communication settings.

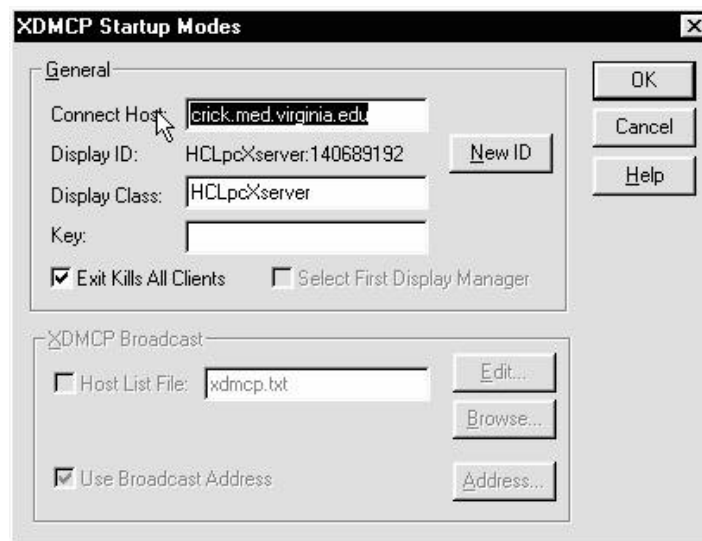


Figure 7 Startup Mode

Window Modes

EXceed offers two different methods for displaying X client windows on the local console. The default is Multiple Window mode which is not recommended since it will not work with the standard X Windows startup files under UNIX. In the Xconfig window, click on Window Mode. Under Window Mode (fig. 8), select Single. The other defaults in the window do not need to be changed. Click OK to save.

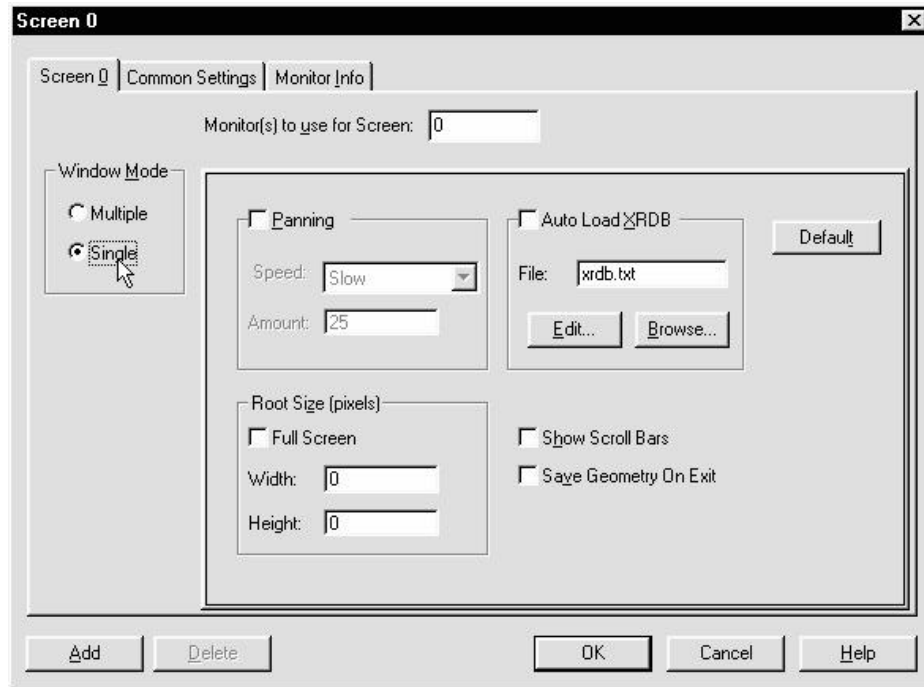


Figure 8 Window Mode

Performance Tuning

If you did not tune the Xserver during installation then click on Performance in the Xconfig window. Click on Tune. This will bring start up the Xserver and then another window will appear. Click on Run All to start the tuning.

X Selection

If you would like to be able to select some text under X Windows and be able to paste it into a Windows application, then you will need to change the default configuration. Click on X Selection in the Xconfig window. At the bottom of the window click on Auto Copy to X Selection and click on Auto Paste to X Selection. This will cause selections under X Windows to be copied to the Windows clipboard.

Starting an X Windows Session

To start the Xserver click on the eXceed icon. For Windows 95/98 and Windows NT this will be under Start/Programs/exceed.

EXceed will start the Xserver and you should see a window (fig. 9) for entering your user id and password. After entering these hit Enter to start up your X Windows session. The smaller window with the stop sign is the eXceed toolbar.



Figure 9 Login Window

Quitting eXceed

To quit eXceed you should exit out of your X Windows session first. Usually there is a menu item for Exit Window Manager when you click on the background with the left mouse button. Then to exit eXceed click on the red X in the upper left-hand corner or if you have a toolbar displayed click on the stop sign.

Troubleshooting

X Windows starts and then dies

Typically you will see a clock and a mailbox icon appear and then your screen will go blank. This is an indication that there is a problem with your X Windows startup files under UNIX. Exit eXceed and startup telnet. Under the eXceed program group there is an icon for telnet. Connect to the same machine as the Xserver is configured for. If you can log on correctly through telnet then there is a problem with the X Windows startup files. To get a new version of the startup files run the command `/uva/bin/install.startup -x`. This will install new startup files for X Windows but not affect your login startup files. Try starting up eXceed again.

If you still have problems and your account is several years old, then you made to install all new startup files. Connect using telnet again. Run the command `/uva/bin/install.startup`. This will save your old startup files so they can be retrieved if necessary. You will need to run `umenu` and set your default printer, mailer, and editor. When the startup files are installed all customizations were wiped out.

Login window appears and then nothing happens

Verify that you have configured eXceed to use Single Window mode. See *Configuring eXceed's Xserver Window Mode* section.

Login window does not appear

Verify that you have configured the correct machine name. See *Configuring eXceed's Xserver Communication* section. If you do not see any errors, then you may trying setting up the communications differently so that eXceed gives you a list of machines to connect to. Under Xconfig, click on Communication. Click on the down arrow under Mode and select XDMCP-broadcast. Click OK to save this setting and try starting eXceed again.

Cursor disappears when connecting to an SGI running TED

To get rid of this problem, quit eXceed and reboot your computer. It may take several reboots before the cursor shows up in this configuration.

Font Errors

Some computers use fonts that eXceed doesn't have access to. To allow eXceed access to these fonts, perform the following. Open up Xconfig and double click on Font. From the Font Settings control panel, click on Font Database. At the bottom of the Font Database window, you will see: Automatic Font Substitution. Make sure this box is NOT checked. While the Font Database window is open, click Add. On the right side of the Add Font Directory window, you will see two options under Font, Directory and Server. Choose Server. Under Host Name type: `fonts.itc.virginia.edu`. Under Transport leave `tcp`. Under Port click after 7000 and change 7000 to 7734. Click OK. Since the font server must be the first font database in the window, make sure `tcp/fonts.itc.virginia.edu:7734` is highlighted, then click Move Up (located in the lower corner of the Font Database window) until it is the first in the list. Click OK. Click Close.

Glossary

X Windows

X Windows is a portable, network transparent windowing system. It allows programs called X clients, running on a remote computer, to display information on and receive input from a local computer via a network connection.

For more information about the X Window System, see document U-014 *Introduction to the X Window System* and document U-014A *More About X Windows*. For more information about UNIX, see document U-001 *UNIX Resource List* and U-002 *Introduction to the UNIX Operating System*. These documents are available on the shelves outside the ITC Help Desk in Wilson Hall or on-line at the ITC Web Site: <http://www.itc.virginia.edu/itcweb/help/docs/home.html>

eXceed

EXceed is an X Windows server for Windows 95, Windows 98 and Windows NT. With eXceed, you can connect to a remote host (called the *client*) and run X programs on that host with the CPU of the remote host doing the work required by the program. The Windows PC running eXceed becomes the *server* and is the display device for the X client. Keyboard and mouse input from the server (the PC) are read by the client (the remote host) and in return the client (the remote host) displays information back to the server (the PC).

Using eXceed, you can run X-based graphics software which is not available on the PC, yet see the results on a display connected to a PC in a window controlled by the remote machine. The remote host is doing all the work and is therefore not a drain on the computing power of the PC. The PC simply becomes an input and display device for the client.

Host

The host is another word for machine.

Client

The client is the other machine you'll be logging on to through eXceed.

Server

The server is your PC which is running eXceed. The server tells the client what actions to perform.