



Using the Nikon LS 2000 Slide scanner

35mm slides

Negative strips

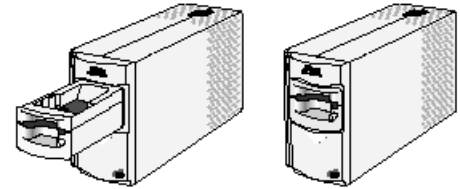
Microscope slides

Hardware Specifications:

Dynamic Range: 3.6
Max Opt. resolution: 2,700 pixels per inch

Choose an adaptor and insert slides

Adapters can be inserted or removed while the scanner is on, but only when the scanner's status LED is glowing steadily. If the LED is blinking, do not insert or remove the adapter.



A Single 35mm slide

Insert Adapter (MA-20) if it is not already in place.

- Slide the adapter into position as shown.
- If adapter doesn't slide in smoothly, remove and try again.

Insert slide

Turn slide sideways and insert into scanner until it stops. The emulsion side which usually has "This side toward screen" stamped on it should face down.

To remove slide, press the eject button.

Note: Do not attempt to remove a slide while scan is in progress or the LED is blinking.

Launch Photoshop and choose **file menu....import....Twain32...**

Step A. Click the settings tab and choose from a list of preset options.

OR

Step B. Choose film type (positive for slides).

Step C. Choose a colorspace--RGB for Color or Grayscale for black&white. (Grayscale option only available when color mgtmt is turned off.)

Step D. Click the preview button.

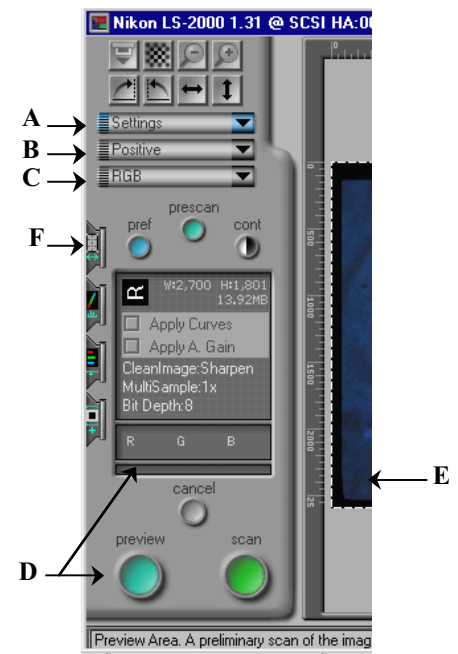
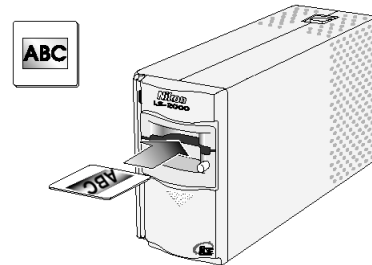
Note the "moving" blue bar status indicating preview in progress.

Step E. Select a crop area by clicking and dragging the mouse across the preview image area.

Step F. Click on the first drawer (scan size) and choose the desired dimensions. Click the tab again to close.

Step G. Press the scan button.

Step H. Put in next slide and follow above steps. Otherwise, close Nikon Scan Software and use Photoshop to modify the image.



Multiple slides

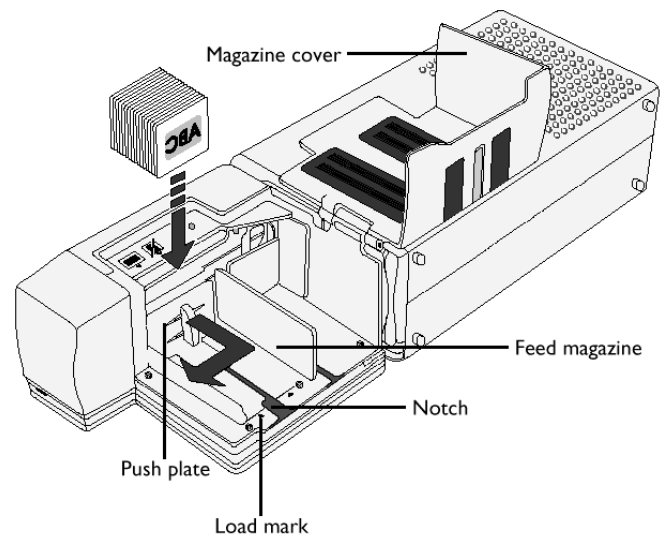
Insert Adapter (SF-200) if it is not already in place.

- Place the unit on its side.
- Slide the adapter into position as shown.
- If adapter doesn't slide in smoothly, remove and try again.

Insert slides

- Open the Magazine cover.
- Pull back the Push plate and bring it slightly toward you to lock it in the "out-of-the-way" position.
- Place the slides in the holder. All slides must have the same orientation. All slides must be in the feeder as pictured.
- **Note:** Do not fill the magazine past the load line.
- Release the push plate.
- Close the Magazine cover.

Note: Do not attempt to remove a slide while scan is in progress or the LED light is blinking. For jams, ask for assistance or refer to the reference manual kept behind the student desk.



Click the start menu and select Nikon Scan 2.5.

Step A. Click the settings tab and choose a preset scanning option for 35mm slides.

OR

Step B. Choose film type (positive for slides).

Step C. Choose a colorspace--RGB for Color. (Grayscale is only available when color management is off.)

Step D. Click the preview button.

Note the "moving" blue bar status indicating preview in progress.

Step E. Select a crop area by clicking and dragging the mouse across the preview image area.

Select a crop area large enough for all images in the set.

Step F. Click on the first drawer (scan size) and choose the desired dimensions. Click the tab again to close.

Step G. Click and open the 4th "drawer" and select Slide Feeder Scan from the bottom of the list.

Step H. Enter the number of slides to scan (The limit of the loader is 50.)
Click the drawer tab again to close it.

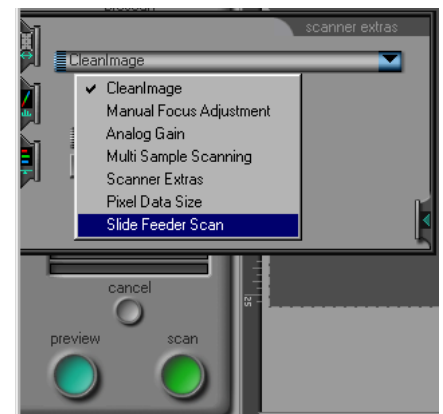
Step I. Press the scan button.

Step J. A dialog box appears.

Choose the directory where you want to save the files.

Choose a file format—usually tiff.

Give the files a prefix name (otherwise they will save as untitled1, untitled2...)



Troubleshooting: If the feeder does not eject all of the slides, click the Eject slide button.

Please feel free to ask for assistance or refer to the reference manual behind the student desk.

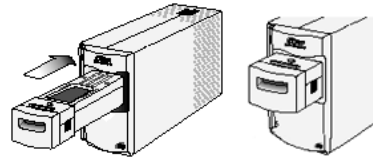
Eject slide button



Scanning strips of film (2 – 6 negatives)

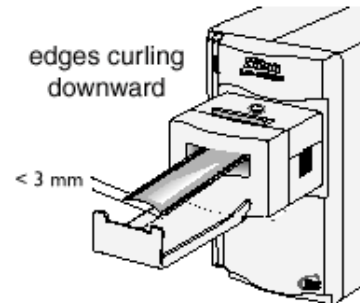
Insert Adapter (SA-20) if it is not already in place.

- Slide the adapter into position as shown.
- If adapter doesn't slide in smoothly, remove and try again.



Insert Film

- Hold film by edges and insert a short distance into slot (the adapter will pull it in the rest of the way).
- Insert the film into the scanner as shown. Emulsion side should face down.
- Make sure film is not dirty or damaged in any way. Dirt can permanently damage your film in the scanner.



Launch Photoshop and choose **file menu....import....Twain32...**

Step A. Click the settings drop down menu to select a preset for negatives
or

Step B. Choose negative as the film type.

Step C. Choose a colorspace--RGB for Color and Grayscale for black&white. (Grayscale is only available when color management is off.)

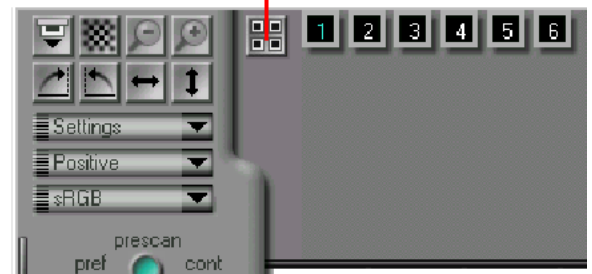
Step D. Click on the Thumbnail drawer for the filmstrip.

Step E. Click the display thumbnails button to see previews of the negatives.

Thumbnail Drawer



Display thumbnails button



Individual Frame

- Step F. Doubleclick on the frame to see an enlarged preview.
- Step G. Close the Thumbnail Drawer.
- Step H. Click on the scan size drawer and set the scan size to the desired dimensions. Click the tab again to close.
- Step I. Press the scan button.
- Step J. When finished, click the eject film in the upper left corner.

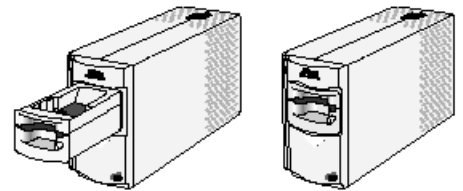
Multiple Frames

- Step F. Control click the thumbnails to scan multiple negatives.
- Step G. Click on the film strip tab to close it.
- Step H. Click on the scan size drawer and set the scan size to the desired dimensions. Click the tab again to close.
- Step I. Press the scan button.
- Step J. When finished, click the eject film in the upper left corner.

A Microscope slide

Insert Adapter (MA-20) if it is not already in place

- Slide the adapter into position as shown.
- If adapter doesn't slide in smoothly, remove and try again.



Insert the Microscope Slide

Total thickness of slide and sealed cover must be no greater than 2mm.

Insert the prepared slide into the FH-G1 holder.

With the Nikon Logo up, slide the holder into the MA film slot in the direction indicated by the arrow.

Note: Do not attempt to remove a slide while scan is in progress or the LED light is blinking.

Launch Photoshop and choose **file menu....import....Twain32...**

IMPORTANT: Do not use the CleanImage Function while scanning prepared slides. .

Step A. Click the settings tab and choose from a list of preset options.

OR

Step B. Choose film type (positive).

Step C. Choose a colorspace--RGB for Color and Grayscale for black&white.

Step D. Click the preview button.

Note the "moving" blue bar status indicating preview in progress.

Step E. Select a crop area by clicking and dragging the mouse across the preview image area.

Step F. Click on the scan size drawer and set the scan size to the desired dimensions. Click the tab again to close.

Step G. Press the scan button.

